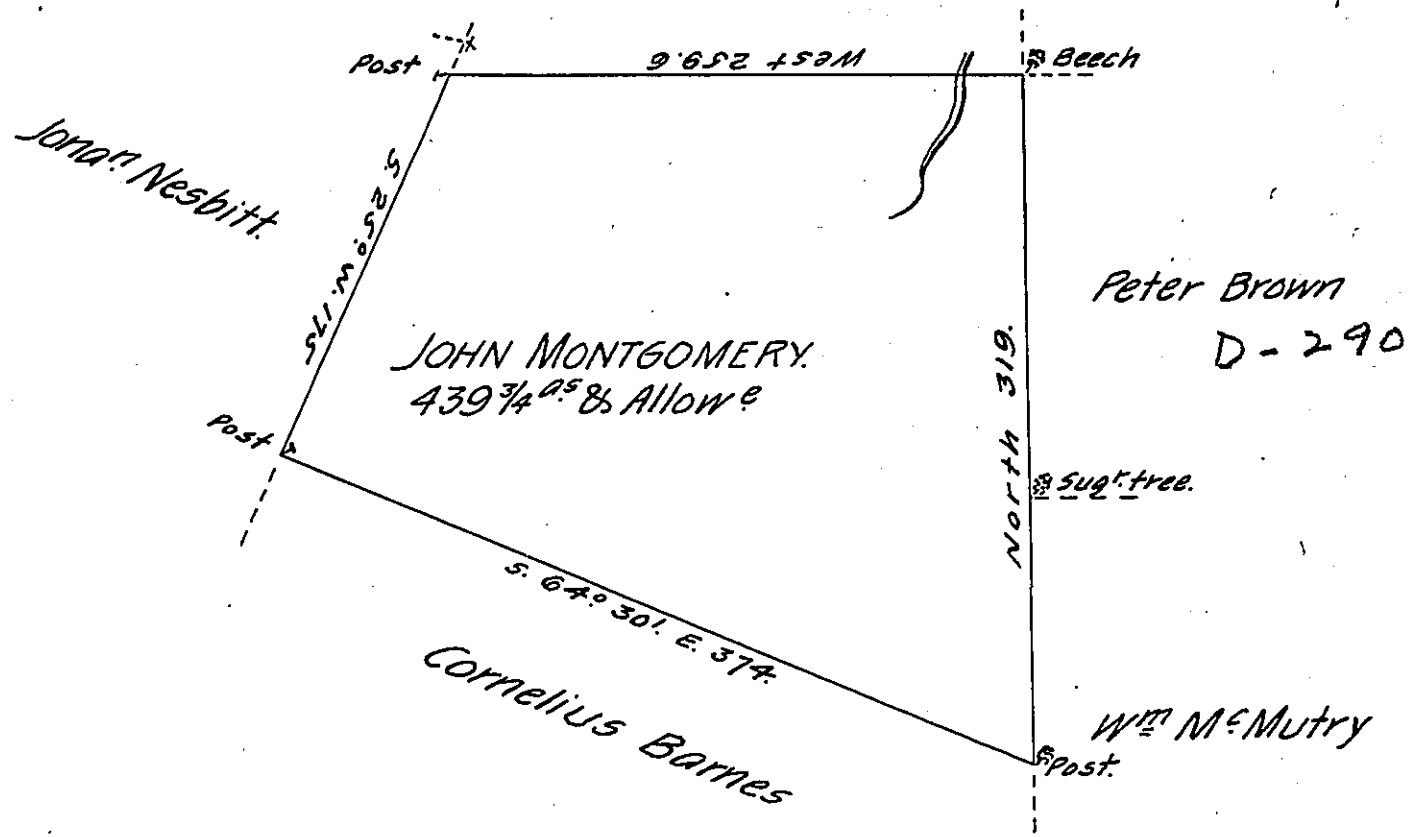


PAGE - 241

Robert Morris



Draught of a tract of land Called _____ situate Joining land Surv'd
 for Robt Morris & others in Luzern— (formerly Northd) County. Containing
 four Hundred & thirty Nine acres— $\frac{3}{4}$ & Allow^e of six $\frac{1}{2}$ Cent for roads &c.

Surv'd for John Montgomery the 15th Day of Nov^r 1786, in pursuance of
 a Warrant Dated the 24th Day of August 1784, by

W^m Gray, D.S.

To John Lukens, Esq^r }
 Surv^r Gen^l }

IN TESTIMONY that the above is a copy of the original remaining on file in
 the Department of Internal Affairs of Pennsylvania, made
 conformably to an Act of Assembly approved the 16th day of
 February, 1833, I have hereunto set my Hand and caused
 the Seal of said Department to be affixed at Harrisburg,
 this sixth day of February 1906.

Isaac R. Brown
 Secretary of Internal Affairs.